

Replacing A Device - GCX

If a device fails or is otherwise offline, it can be “replaced” with another similar device.

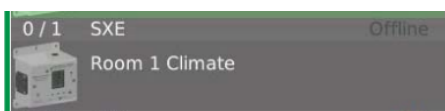
This allows the new device to assume the names and assignments in the control functions of the original device without the need to review the controls and update the assignments to the replacement device.

Tools Required:

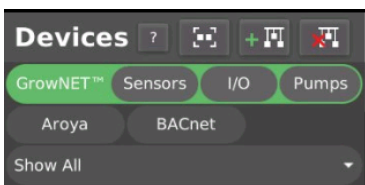
- RJ45 Cable Tester
- New RJ45 Cable
- New Device

Process:

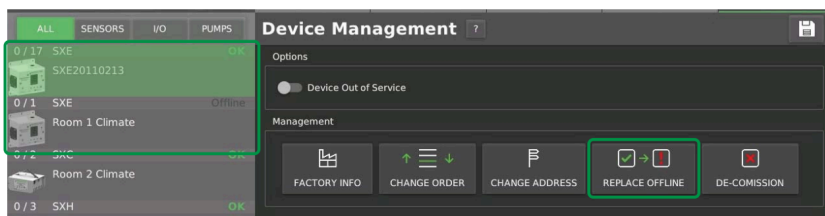
- ☐ Test RJ45 Cable. If necessary, replace the RJ45 cable.
- ☐ Leave the offline device on the system (do not remove it from the list).



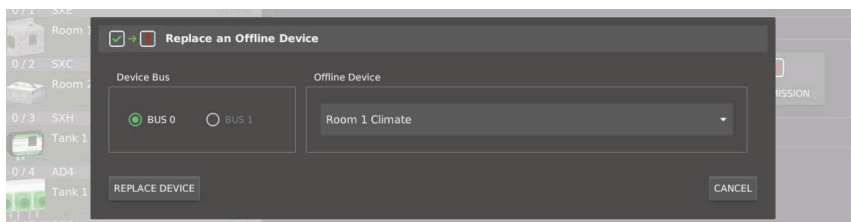
- ☐ Add the new device following the “Add Device” procedure from GCX Manual.



- ☐ Select the new device and press the “REPLACE OFFLINE” button (Manage Tab).



- ☐ Select the offline device you want to replace from the list.



- ❖ The new device will replace the old device.