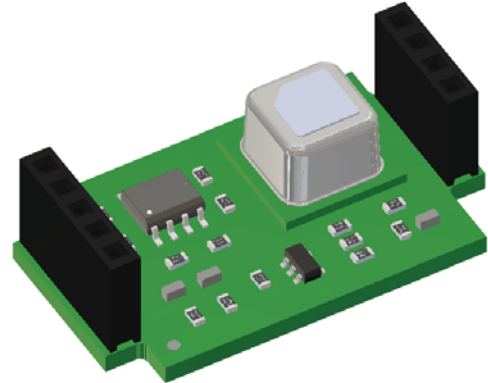


CO2 Sensor Module

Specifications

CO2 Range	400-40,000ppm
CO2 Accuracy	±50ppm + 3% of reading
Measurement Technology	IR Photo Accoustic
Filter	Hydrophobic Membrane
Replaces	Sensair S8 CO2 Sensors
Communication	UART



Contents

Features	2
Installation, SXC (Generation 2)	3
Installation, SXC (Generation 1)	4
Installation, SXE/SXG	5
Storage and Disposal	6
Warranty	6

KEEP THESE INSTRUCTIONS

REV 8/24

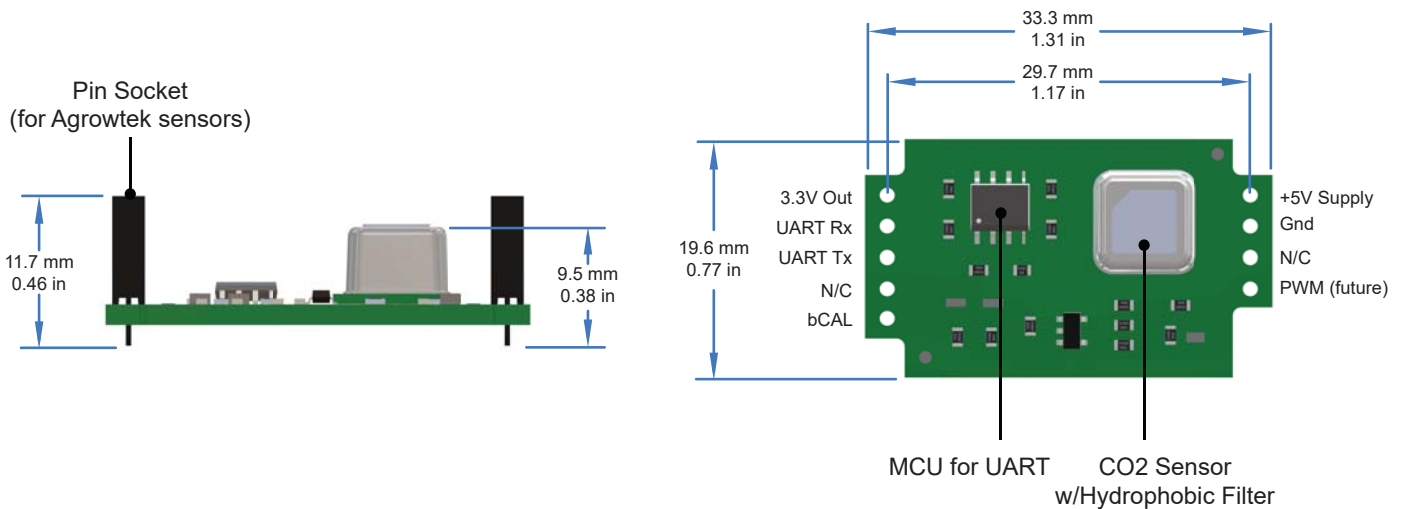
Features

Agrowtek's new SX-CO2 gas sensor modules use new photo-acoustic gas sensing technology to deliver accurate readings up to 40,000 ppm. Compatible with all SXC, SXE, SXG, SXW and other environment sensors from Agrowtek, or with Senseair S8 sensor applications.

Robust CO2 sensor element features a metallic housing and a hydrophobic filter element which prevents contamination from moisture and fine particles. The superior filter element provides enhanced protection from sensor drift and damage in agricultural environments.

Senseair S8 Replacement

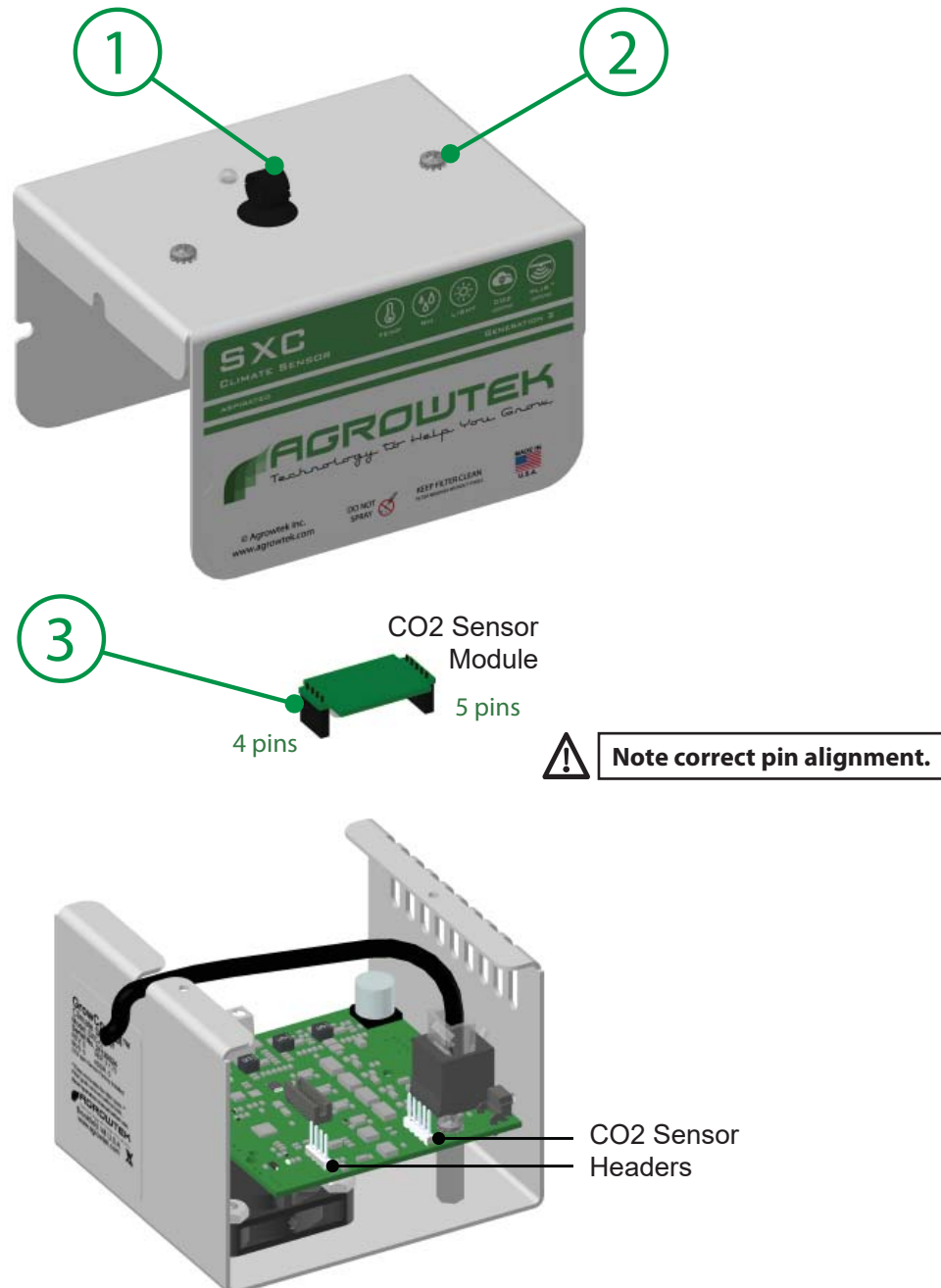
SX-CO2 sensor module is a drop-in replacement for Senseair S8 series CO2 sensors. Compatible dimensions, pinout, commands and voltage levels allow seamless replacement of sensors in the field without firmware or hardware updates. Currently only supports UART commands.



Installation, SXC (Generation 2)

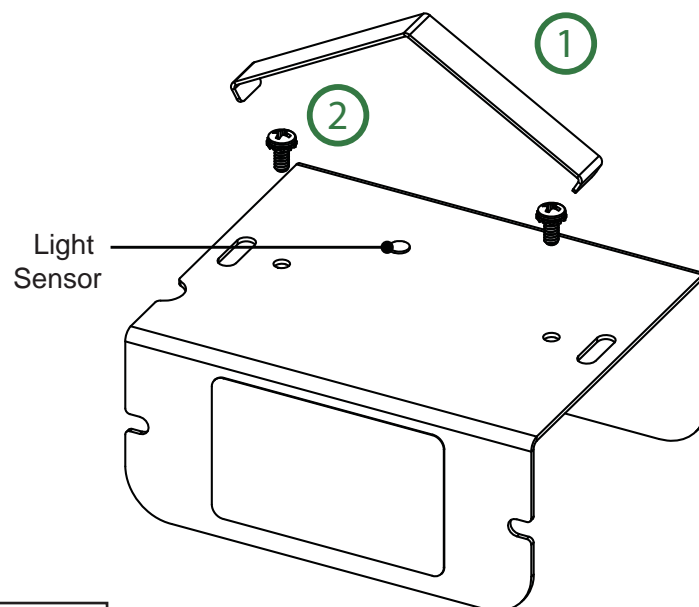
The SXC sensor may be upgraded to sense and control CO2 ppm with a precision NDIR type CO2 sensor.

1. Disconnect cables from the sensor.
2. Remove the two cover screws (2) and lift off the cover.
3. Locate the CO2 headers on the circuit board.
4. Position and install the CO2 sensor module (3) ensuring the sensor is oriented correctly.
Note: One header is 4-pins and the other is 5-pins. *Installing the sensor backwards will damage the module.*
5. Re-install the top cover and re-connect cables.
6. Check to ensure the CO2 reading is now working.

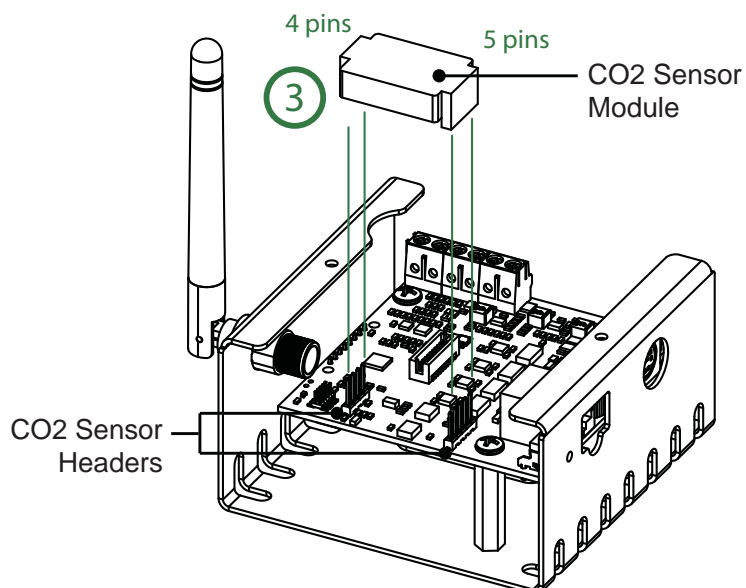


Installation, SXC (Generation 1)

1. Disconnect cables from the sensor.
 2. Remove the hanging bracket (1).
 3. Take note the orientation of the light sensor on the cover.
 4. Remove the two cover screws (2) and lift off the cover.
 5. Locate the CO2 headers on the circuit board.
 6. Position and install the CO2 sensor module (3) ensuring the sensor is oriented with the correct pin headers. One header is 4-pins and the other is 5-pins. *Installing the sensor backwards will damage the CO2 module.*
 7. Re-install the top cover and re-connect cables.
- Note the light sensor orientation is correct and not backwards.*
8. Check to ensure the CO2 reading is now working.

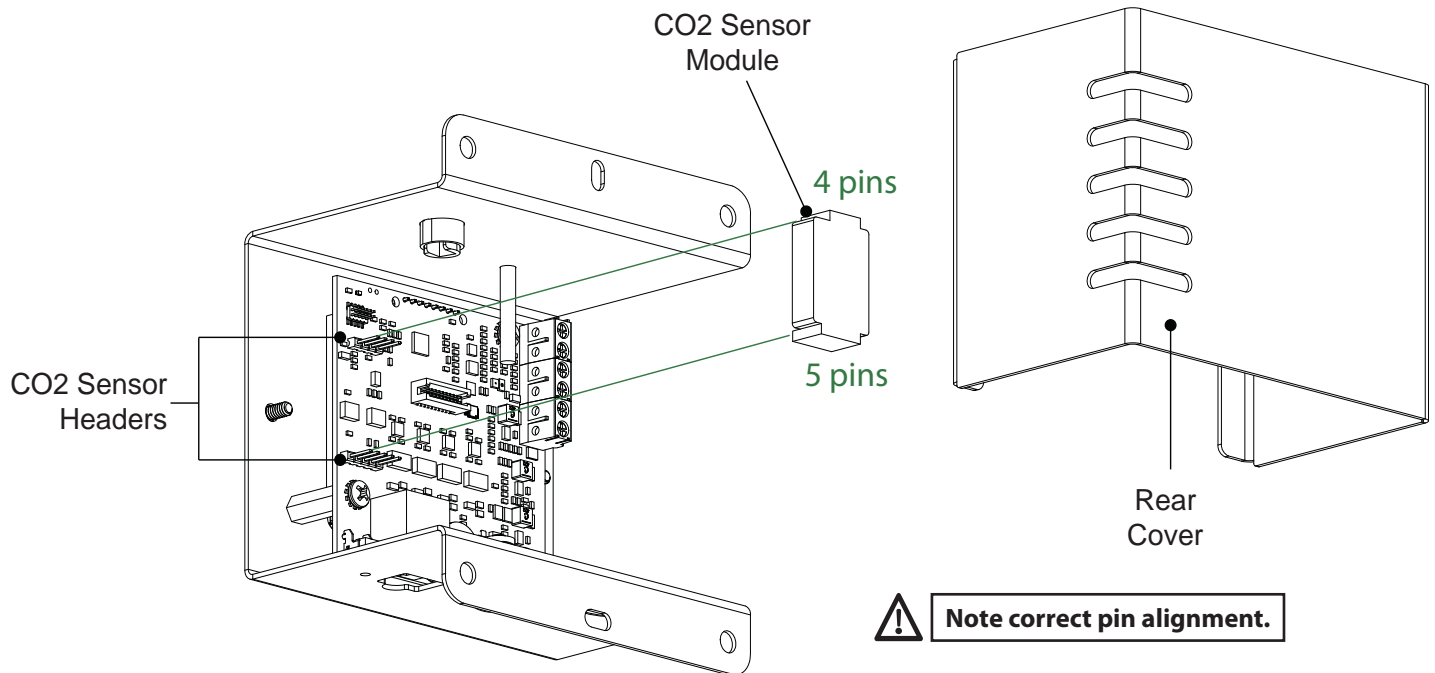


 **Note correct pin alignment.**



Installation, SXE/SXG

1. Disconnect power from the sensor.
2. Remove the rear cover by removing the two screws; use caution not to damage the fan wires.
3. Locate the CO2 headers. One header is 4-pins and the other is 5-pins.
4. Position and install the CO2 sensor module ensuring the sensor is oriented with the correct pin headers.
5. Re-install the rear cover and re-connect power. Check to ensure the CO2 reading is now working.



Storage and Disposal

Storage

Store equipment in a clean, dry environment with ambient temperature between 10-50°C.

Disposal

This industrial control equipment may contain traces of lead or other metals and environmental contaminants and must not be discarded as unsorted municipal waste, but must be collected separately for the purpose of treatment, recovery and environmentally sound disposal. Wash hands after handling internal components or PCB's.

Warranty

Agrowtek Inc. warrants that all manufactured products are, to the best of its knowledge, free of defective material and workmanship and warrants this product for 1 year from the date of purchase. This warranty is extended to the original purchaser from the date of receipt. This warranty does not cover damages from abuse, accidental breakage, or units that have been modified, altered, or installed in a manner other than that which is specified in the installation instructions. Agrowtek Inc. must be contacted prior to return shipment for a return authorization. No returns will be accepted without a return authorization. This warranty is applicable only to products that have been properly stored, installed, and maintained per the installation and operation manual and used for their intended purpose. This limited warranty does not cover products installed in or operated under unusual conditions or environments including, but not limited to, high humidity or high temperature conditions. The products which have been claimed and comply with the aforementioned restrictions shall be replaced or repaired at the sole discretion of the Agrowtek Inc. at no charge. This warranty is provided in lieu of all other warranty provisions, express or implied. It is including but not limited to any implied warranty of fitness or merchantability for a particular purpose and is limited to the Warranty Period. In no event or circumstance shall Agrowtek Inc. be liable to any third party or the claimant for damages in excess of the price paid for the product, or for any loss of use, inconvenience, commercial loss, loss of time, lost profits or savings or any other incidental, consequential or special damages arising out of the use of, or inability to use, the product. This disclaimer is made to the fullest extent allowed by law or regulation and is specifically made to specify that the liability of Agrowtek Inc. under this limited warranty, or any claimed extension thereof, shall be to replace or repair the Product or refund the price paid for the Product.