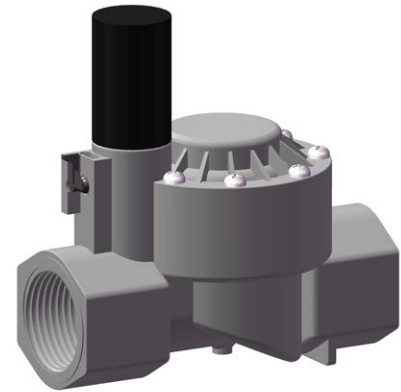


## Rugged | Economical | Smart Design

Electric solenoid actuated diaphragm water valve for irrigation and fertigation equipment, liquid level controllers and more.

Intelligent design with self-cleaning ports and diaphragm for resistance to sediment, and fail-safe mechanism preventing failure in the open position. Zero stress diaphragm design to prevent stretching, a common failure mode. Molded shock-cone for anti-water hammer. Manual bleed/open lever. High strength glass-filled nylon body with stainless steel hardware.

Operates on 24Vac with dry-contacts or with Agrowtek VX8i valve controllers and or VX8P valve panels.



Max Pressure:  
150 psi



Stainless Steel  
Solenoid Actuator



Self-Cleaning  
Resistant to Sediment



Made in  
USA

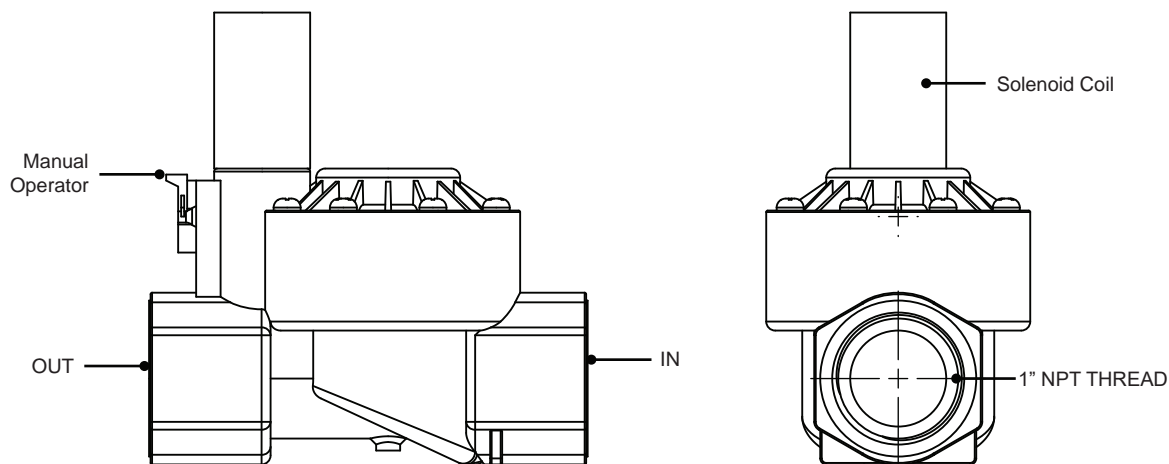
### Applications

- Automatic Fill/Drain Level Control
- Water & Nutrient Tanks
- Recirculating Hydroponic Systems
- Aquarium/Aquaponics
- Irrigation Systems

### Specifications

Voltage Input:	24 Vac
Current Consumption:	500-600 mA
Connection Thread:	1" NPT Female
Max Flow Rate:	0.25 - 35 gpm
Max Pressure:	4 - 150 psi
Reverse Flow:	No Protection

### Features



### Ordering Options

WX1  
└─ 1: 1" NPT

Includes 8" lead length for solenoid.

Note: Actual features appearance may vary.