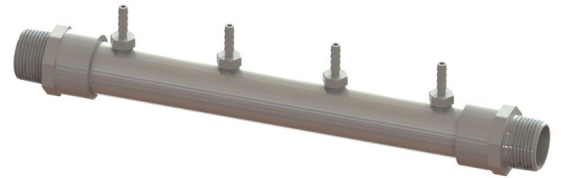


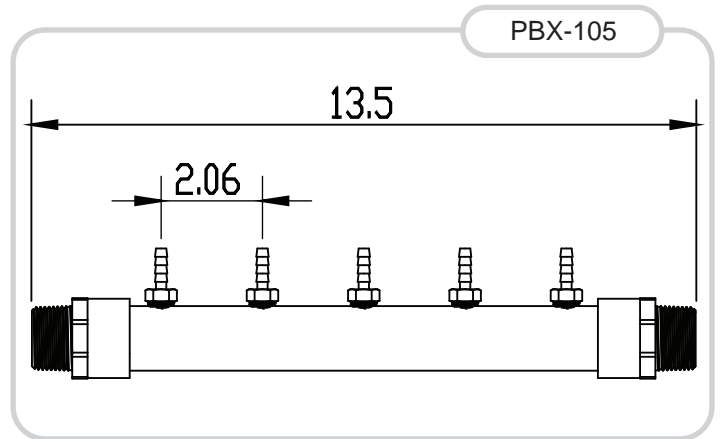
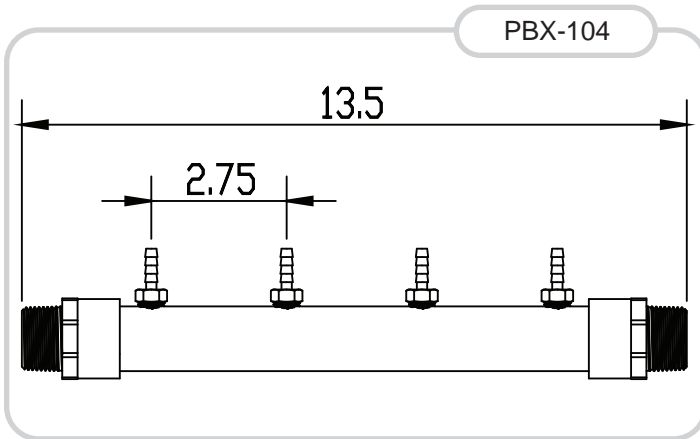
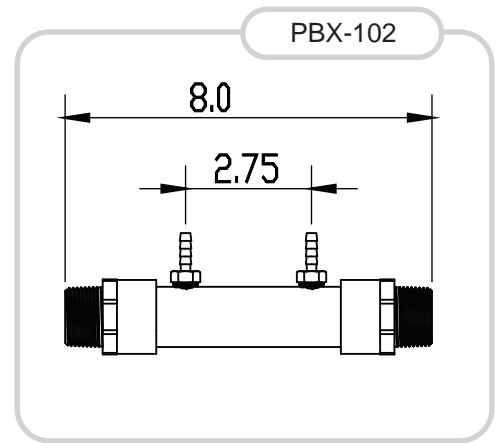
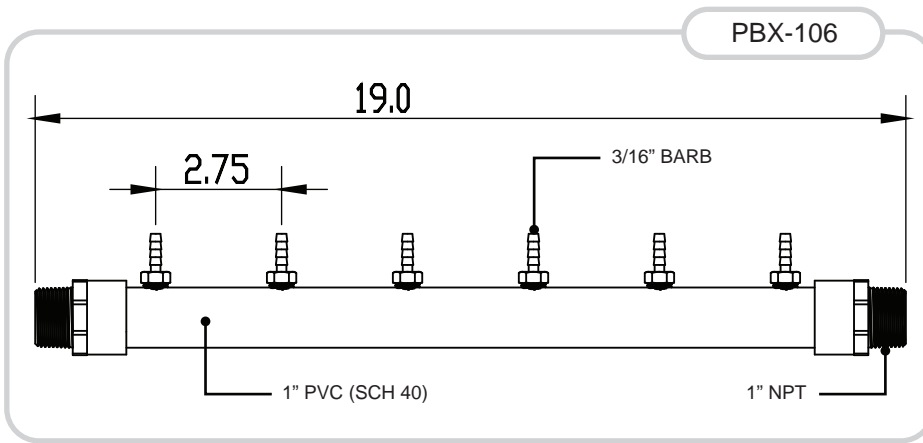
1" Chemical Injection Manifolds

PBX-104 is a simple multi-port manifold for connecting Agrow-Dose peristaltic dosing pumps into a recirculating sample loop for injecting chemicals such as nutrients or pH buffers.

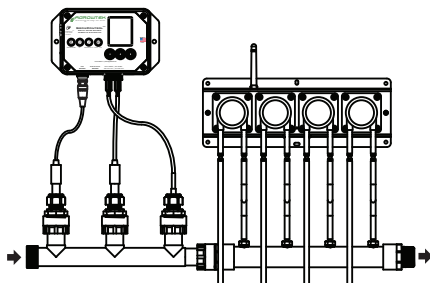
The PBX-100 series injection manifolds are often combined with a PBX-210, PBX-310, or PBX-410 sensor probe manifold for sampling of the solution prior to the injection point.



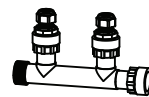
Specifications



Typical Installation

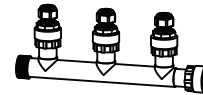


Optional Accessories



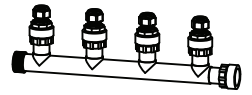
PBX-210

2-Port Sensor Manifold



PBX-310

3-Port Sensor Manifold



PBX-410

4-Port Sensor Manifold