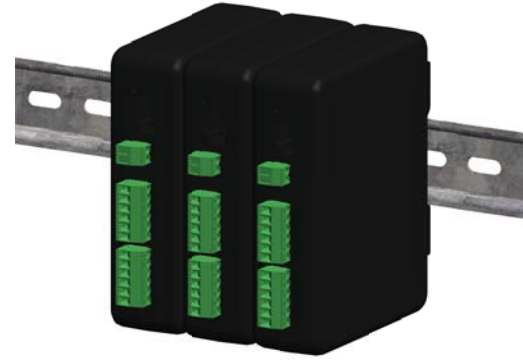


DXIO digital control interface features up to two (2) 3.5A NO/NC relay contacts, two (2) 1-Amp transistor (FET) outputs capable of 1kHz PWM, and two (2) analog inputs selectable for 0-5V or 0/4-20mA. Ideal for operating DC powered solenoid and irrigation valves, relays & contactors, etc. PWM functions for integration with dimmable lighting or variable speed motor controllers. Analog inputs allow SXL liquid sensor connectivity and other third-party 0-5V or 0/4-20mA sensors.

Connects instantly to Agrowtek's master control systems or intelligent sensors via a GrowNET port for advanced automated control functions. GrowNET port accepts MODBUS RTU communication for PLC control.

LED indicators on the front panel provide status of power supply and data communications. Designed for DIN rail mounting in control cabinets. *UL Listing pending.*



### Features



Two (2) 1-Amp Transistor Outputs with 1kHz PWM option



Two (2) 3.5-Amp NO/NC Form C Relays



Two (2) 0-5V or 0/4-20mA Analog Inputs



PWM Capable Transistor Outputs



Built-In Flyback & Transient Suppression on FET outputs



GrowNET™ Digital Communication Port



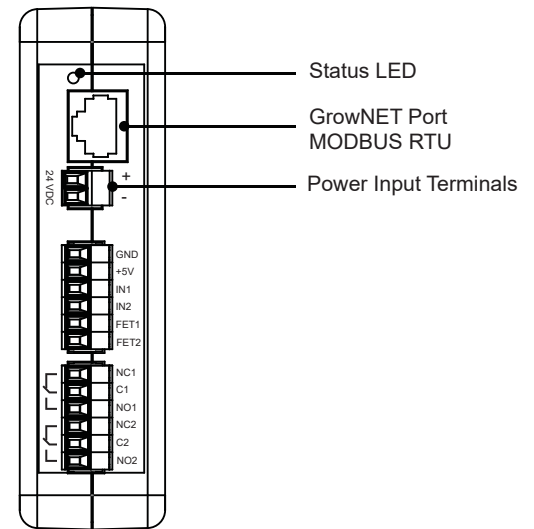
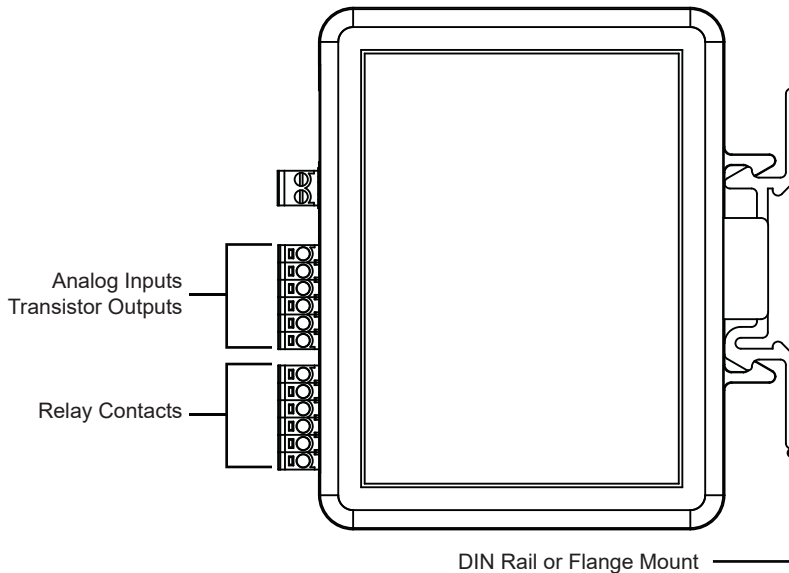
MODBUS RTU for industrial PLC applications  
12-24Vdc, DIN rail mount



Made in USA



1-Year Warranty



Electrical Process Control Equipment  
File No.: E516807

Dimensions:  
4.5" H x 1.3" W x 4.1" D

## Applications



Irrigation Solenoid Valves



Custom Equipment & Sensors



Relay Control  
Load control in buildings & greenhouses



Variable Speed Fans & Motors

### GrowControl™ GCX Controller



Connect to GrowControl™ Cultivation Controllers for advanced functions as part of a complete facility control solution. GrowControl™ GCX systems feature intelligent control functions optimized for today's complex growing environments.

### USB



Connect GrowNET™ devices directly to a computer using the LX1 USB AgrowLINK™ and free PC software for data logging and monitoring.

### MODBUS



GrowNET™ devices are easy to implement on PLC systems with MODBUS RTU and a LX2 ModLINK™ interface. Multiple GrowNET™ devices can be connected to an interface with HX8 GrowNET™ hubs.

## Ordering Options

DXIO

No Options

## Optional Accessories



**LX1**  
USB  
AgrowLINK™



**LX2**  
RS-485  
ModLINK™



**HX8**  
GrowNET™  
Device Hub