

**LC-30**  
Greenhouse Lighting Contactor Module



**Installation  
&  
User Operation Manual**



**DANGER**

Risk of Electric Shock!

This system operates on **240 Volts** and can cause electric shock resulting in injury or death.  
**Read all warnings** and instructions before operating this equipment.

Installation to be performed by qualified electrician according to National and local electrical code.



**WARNING**

The controller enclosure is not rated for water contact.  
**DO NOT** expose to direct, spray, splashing, misting or other water contact!

**⚠ WARNING**

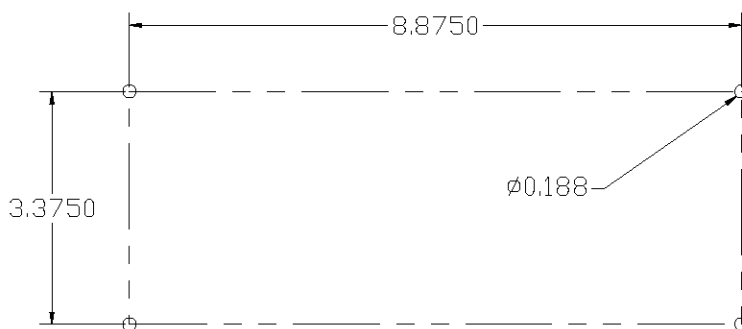
Read these requirements, installation and operating instructions very carefully. Failure to follow the instructions could result in a controller malfunction. A malfunction could result in serious equipment damage, property damage, bodily injury or death.

## Specifications

**Switching Voltage:** 240 VAC (MAX)  
**Trigger Voltage:** 120 VAC  
**Max Current:** 30 Amps @ 240 VAC  
**Max Power:** 7,200 Watts  
(6,000 Watts HID Lighting)

Operating Environment Conditions:

**Humidity:** 90% RH MAX (Non-condensing)  
**Temperature:** 32-131°F (0-55°C)



## Installation Instructions

### Mounting the Relay Box:

The relay box can be mounted to a wall or other location using the included mounting tabs. Mount the unit in a location where it will be out of direct moisture contact and away from high heat.

**⚡ FOR YOUR SAFETY**

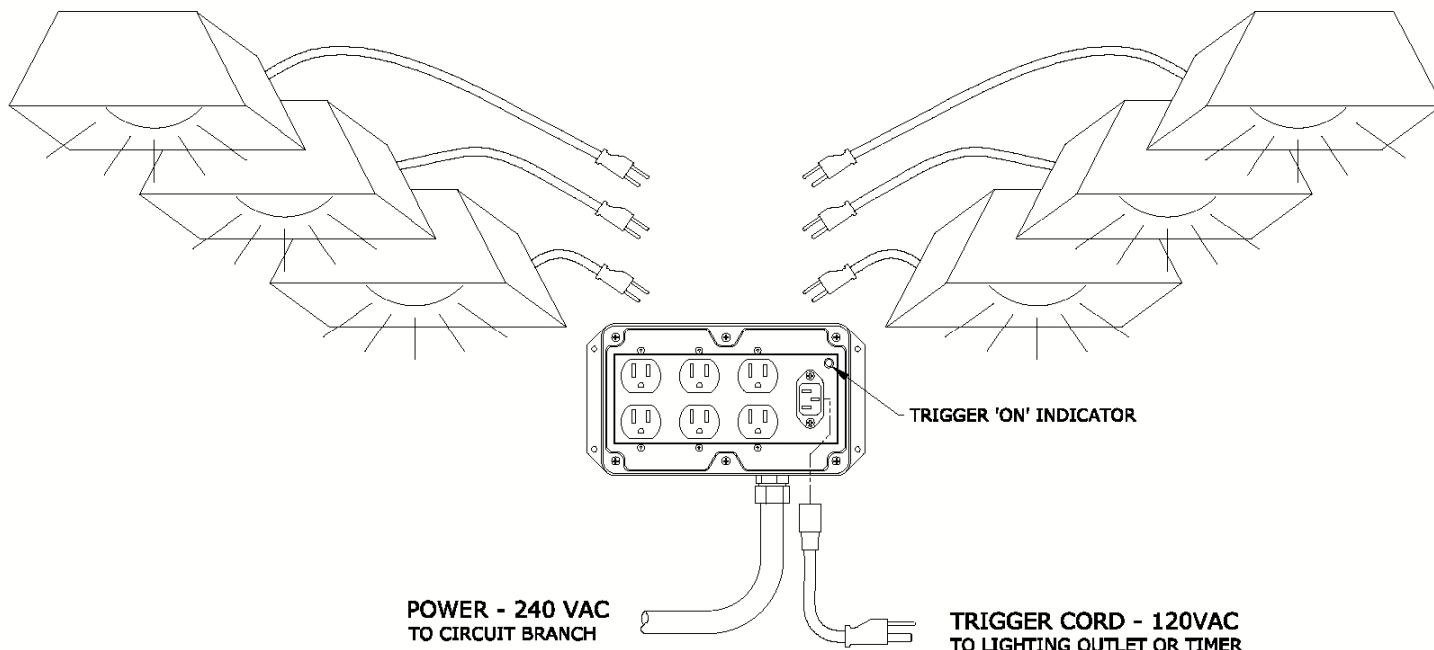
This controller is equipped with a ground lug and must be properly grounded.

**⚠ WARNING**

Ensure that the supporting material is capable of handling the load of the controller. Weak or poor mounting locations may result in the controller falling and causing personal injury, property damage and or death.

### Typical Application:

The LC-30 is designed to operate six (6) 1000 Watt HID growing lamps.



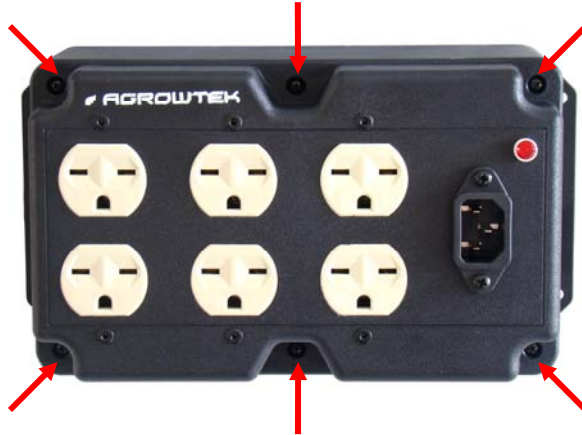
# Wiring

The LC-30 is 120V trigger operated and switches 240VAC from a wired power supply to the outlets on the front of the unit. Outlets may be either 120V style (NEMA 5-20) or 240V style (NEMA 6-15) and can be operated at 240VAC up to 30 Amps. A 1.109" opening is provided for electrical connection.

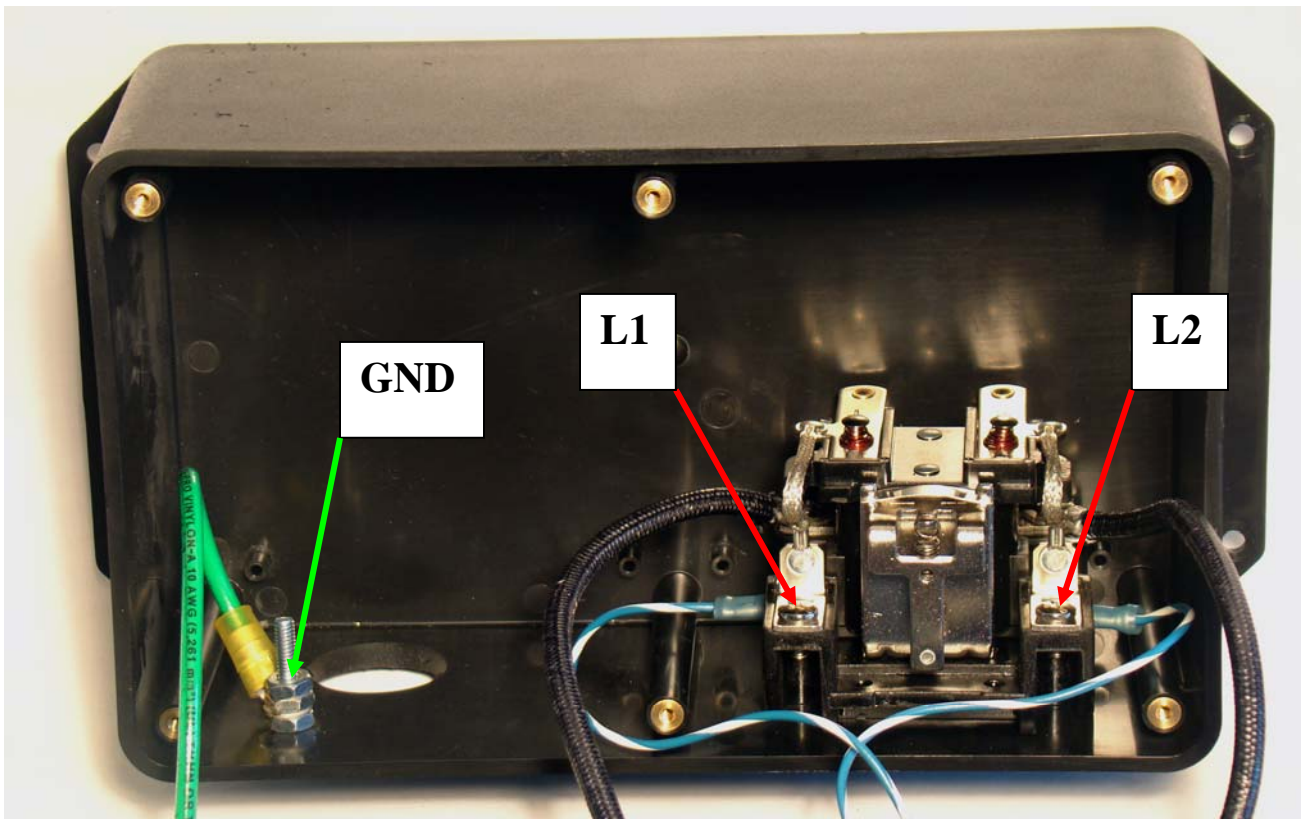
 **IMPORTANT**

This equipment must be wired into a branch-protected circuit in accordance with local electrical code.

- 1) Remove the six (6) screws and remove the front cover to expose the contactor and ground terminal.



- 2) Install the wiring fittings and wire to the terminals as labeled per local code. Ensure wiring does not interfere with contactor operation when cover is re-installed. Install ground lead under top nut provided.



- 3) Re-install cover. Ensure contactor functions properly.

# Troubleshooting

## PROBLEM:

Power is not coming on to the receptacles.

## SOLUTION:

1. Check for a click noise when the control cable is energized. If so, then the control cable has power and the contactor is working.
2. Check power to the power cable; ensure the module is getting supply power.
3. Ensure the contactor function is not impeded by internal wiring.
4. Check contacts for failure.

## Limited Warranty

Agrowtek Inc. warrants that all manufactured products are, to the best of its knowledge, free of defective material and workmanship and warrants the components for the following period from the date of purchase:

Power Relay/Contactor Modules: **2 Years**

This warranty is extended only to the original purchaser of the equipment from the date of purchase detailed on the purchase invoice.

This warranty does not cover damages from abuse, accidental breakage, or units that have been modified, altered, or installed in a manner other than that which is specified in the installation instructions.

Agrowtek Inc. must be contacted prior to return shipment for a return authorization. No returns will be accepted without a return authorization. The original purchase invoice must accompany any warranty claims.

This warranty is applicable only to products that have been properly stored, installed, and maintained per the installation and operation manual and used for their intended purpose. This limited warranty does not cover products installed in or operated under unusual conditions or environments including, but not limited to, high humidity or high temperature conditions.

The products which have been claimed and comply with the aforementioned restrictions shall be replaced or repaired at the sole discretion of the Agrowtek Inc. at no charge.

This warranty is provided in lieu of all other warranty provisions, express or implied. It is including but not limited to any implied warranty of fitness or merchantability for a particular purpose and is limited to the Warranty Period.

In no event or circumstance shall Agrowtek Inc. be liable to any third party or the claimant for damages in excess of the price paid for the product, or for any loss of use, inconvenience, commercial loss, loss of time, lost profits or savings or any other incidental, consequential or special damages arising out of the use of, or inability to use, the product. This disclaimer is made to the fullest extent allowed by law or regulation and is specifically made to specify that the liability of Agrowtek Inc. under this limited warranty, or any claimed extension thereof, shall be to replace or repair the Product or refund the price paid for the Product.

*This warranty provides the purchaser with specific rights but the claimant may have other rights which vary from jurisdiction to jurisdiction.*